



OVO Circular Bold

Font Format: Opentype PostScript (Opentype CFF)
Designer: Laurenz Brunner





Glyph Map

All 756 glyphs of OVO Circular Bold in physical order.

				!	"	#	\$	%	&	'	()	*	+	,	-	.	/	0
1	2	3	4	5	6	7	8	9	:	;	<	=	>	?	@	A	B	C	D
E	F	G	H	I	J	K	L	M	N	O	P	Q	R	S	T	U	V	W	X
Y	Z	[\]	^	_	`	a	b	c	d	e	f	g	h	i	j	k	l
m	n	o	p	q	r	s	t	u	v	w	x	y	z	{		}	~		i
¢	£	¤	¥	¦	§	¨	©	ª	«	¬	-	®	¯	°	±	²	³	´	µ
¶	·	¸	¹	º	»	¼	½	¾	¿	À	Á	Â	Ã	Ä	Å	Æ	Ç	È	É
Ê	Ë	Ì	Í	Î	Ï	Ð	Ñ	Ò	Ó	Ô	Õ	Ö	×	Ø	Ù	Ú	Û	Ü	Ý
Þ	ß	à	á	â	ã	ä	å	æ	ç	è	é	ê	ë	ì	í	î	ï	ð	ñ
ò	ó	ô	õ	ö	÷	ø	ù	ú	û	ü	ý	þ	ÿ	Ā	ā	Ă	ă	Ą	ą
Ć	ć	Ĉ	ĉ	Č	č	Ď	ď	Đ	đ	Ē	ē	Ĕ	ĕ	Ė	ė	Ę	ę		
Ě	ě	Ğ	ğ	Ĝ	ĝ	Ġ	ġ	Ĵ	ĵ	Ĥ	ĥ	Ħ	ħ	Ĩ	ĩ	Ĭ	ĭ	Į	į
İ	ı	Í	í	U	ij	Ĵ	ĵ	Ɔ	ɔ	κ	Ł	ł	Ț	ț	ȼ	Ƚ	Ⱦ	ȿ	ⱥ
ŧ	Ŋ	ŋ	Ņ	ņ	Ñ	ñ	ň	Ň	ŋ	Ō	ō	Ǫ	ǫ	Ǯ	ǯ	œ	ø	Ř	ř
Ṙ	ṙ	Ř	ř	Ś	ś	Ŝ	ș	Ş	ş	Š	š	Ț	ț	ẗ	ẘ	ẙ	ẑ	Ẓ	ẓ
Ū	ū	Ŭ	ŭ	Ű	ű	Ų	ų	Ẃ	ẃ	Ỳ	ỳ	Ỳ	ỷ	Ż	ż	Ž	ž	Ž	ž
ž	Θ	ƒ	ℤ	ℤ	Á	á	Æ	æ	Ø	ø	Ș	ș	Ț	ț	Ј	ə	ˆ	ˇ	-
˘	˙	˚	˛	˜	˝	Δ	Ω	μ	π	Ẁ	ẁ	Ẃ	ẃ	Ẅ	ẅ	Ẋ	ẏ	Ỳ	ỳ
			—	—	’	’	, ”	”	”	†	‡	•	…	‰	‹	›	**	/	
**	0	4	5	6	7	8	9	0	1	2	3	4	5	6	7	8	9	€	ℓ
™	Ω	Ⅰ	Ⅱ	Ⅲ	Ⅳ	Ⅴ	Ⅵ	Ⅶ	Ⅷ	Ⅸ	Ⅹ	Ⅺ	Ⅻ	Ⅼ	Ⅽ	Ⅾ	Ⅿ	←	↑
↖	↗	↘	↙	↻	↷	↶	↵	↳	↴	↺	↻	↹	↻	Δ	Π	Σ	-	/	·
∞	∫	≈	≠	≤	≥	·	Ⓟ	■	□	▢	▲	△	◇	○	●	☉	✓	×	①
②	③	④	⑤	⑥	⑦	⑧	⑨	↴	↻	’	ff	fi	fl	ffi	ffl		i	ℓ	ℓ
0	1	2	3	4	5	6	7	8	9	0	1	2	3	4	5	6	7	8	9
	a	b	c	d	e	f	g	h	i	j	k	l	m	n	o	p	q	r	s
t	u	v	w	x	y	z		#	\$	%	+	,	.	0	1	2	3	4	5
6	7	8	9	:	;	<	=	>	¢	£	¤	¥	§	¬	±	×	÷	ƒ	
	%	€	—	≈	≠	≤	≥	()	-	[]	{	}	i	«	-	»	¿



–	—	<	>	ff	ffi	ffl	fi	fl	G	Ê	Ë	Ė	Ğ	Ǻ	à	á	â	ã	ä
å	ā	ǎ	q	á	ı	ı	ı	ı	&	1	®	"	#	\$	%	'	+	0	1
2	3	4	5	6	7	8	9	<	=	>	¢	£	¤	¥	ª	¬	°	±	°
¼	½	¾	x	÷	‰	/	€	ℓ	I	II	III	IV	V	VI	VII	VIII	IX	X	L
C	D	M	–	∞	≈	≠	≤	≥	0	1	2	3	4	5	6	7	8	9	a
b	c	d	e	f	g	h	i	j	k	l	m	n	o	p	q	r	s	t	u
v	w	x	y	z	#	\$	%	+	0	1	2	3	4	5	6	7	8	9	<
=	>	¢	£	¤	¥	¬	±	x	÷	‰	€	–	≈	≠	≤	≥	1	x	"
"	,	,	`	¨	ˉ	˘	ˆ	˙	˚	˛	˜	˚	˜	˚	˜	˚	˜	˚	˜

Encoded Characters

All encoded characters should be accessible with every unicode capable application. For details about Unicode Blocks visit the [Unicode Website](#).

Basic Latin

Block from 0000 to 007F

0000	000D	0020	0021	0022	0023	0024	0025	0026	0027	0028	0029	002A	002B	002C	002D	002E	002F	0030	0031
			!	"	#	\$	%	&	'	()	*	+	,	-	.	/	0	1
0032	0033	0034	0035	0036	0037	0038	0039	003A	003B	003C	003D	003E	003F	0040	0041	0042	0043	0044	0045
2	3	4	5	6	7	8	9	:	;	<	=	>	?	@	A	B	C	D	E
0046	0047	0048	0049	004A	004B	004C	004D	004E	004F	0050	0051	0052	0053	0054	0055	0056	0057	0058	0059
F	G	H	I	J	K	L	M	N	O	P	Q	R	S	T	U	V	W	X	Y
005A	005B	005C	005D	005E	005F	0060	0061	0062	0063	0064	0065	0066	0067	0068	0069	006A	006B	006C	006D
Z	[\]	^	_	`	a	b	c	d	e	f	g	h	i	j	k	l	m
006E	006F	0070	0071	0072	0073	0074	0075	0076	0077	0078	0079	007A	007B	007C	007D	007E			
n	o	p	q	r	s	t	u	v	w	x	y	z	{		}	~			

Latin-1 Supplement

Block from 0080 to 00FF

00A0	00A1	00A2	00A3	00A4	00A5	00A6	00A7	00A8	00A9	00AA	00AB	00AC	00AD	00AE	00AF	00B0	00B1	00B2	00B3
	ı	ç	£	¤	¥	¦	§	¨	©	ª	«	¬	-	®	¯	°	±	²	³
00B4	00B5	00B6	00B7	00B8	00B9	00BA	00BB	00BC	00BD	00BE	00BF	00C0	00C1	00C2	00C3	00C4	00C5	00C6	00C7
´	µ	¶	·	¸	¹	º	»	¼	½	¾	¿	À	Á	Â	Ã	Ä	Å	Æ	Ç
00C8	00C9	00CA	00CB	00CC	00CD	00CE	00CF	00D0	00D1	00D2	00D3	00D4	00D5	00D6	00D7	00D8	00D9	00DA	00DB
È	É	Ê	Ë	Ì	Í	Î	Ï	Ð	Ñ	Ò	Ó	Ô	Õ	Ö	×	Ø	Ù	Ú	Û
00DC	00DD	00DE	00DF	00E0	00E1	00E2	00E3	00E4	00E5	00E6	00E7	00E8	00E9	00EA	00EB	00EC	00ED	00EE	00EF
Ü	Ý	Þ	ß	à	á	â	ã	ä	å	æ	ç	è	é	ê	ë	ì	í	î	ï
00F0	00F1	00F2	00F3	00F4	00F5	00F6	00F7	00F8	00F9	00FA	00FB	00FC	00FD	00FE	00FF				
ð	ñ	ò	ó	ô	õ	ö	÷	ø	ù	ú	û	ü	ý	þ	ÿ				

Latin Extended-A

Block from 0100 to 017F

0100	0101	0102	0103	0104	0105	0106	0107	0108	0109	010A	010B	010C	010D	010E	010F	0110	0111	0112	0113
Ā	ā	Ă	ă	Ą	ą	Ć	ć	Ĉ	ĉ	Ċ	ċ	Č	č	Ď	ď	Đ	đ	Ē	ē
0114	0115	0116	0117	0118	0119	011A	011B	011C	011D	011E	011F	0120	0121	0122	0123	0124	0125	0126	0127
Ĕ	ĕ	Ė	ė	Ę	ę	Ě	ě	Ĝ	ĝ	Ğ	ğ	Ġ	ġ	Ģ	ģ	Ĥ	ĥ	Ħ	ħ
0128	0129	012A	012B	012C	012D	012E	012F	0130	0131	0132	0133	0134	0135	0136	0137	0138	0139	013A	013B
Ĩ	ĩ	Ī	ī	Ĭ	ĭ	Į	į	İ	ı	U	ij	Ĵ	ĵ	ķ	ķ	κ	Ł	ł	Ḷ
013C	013D	013E	013F	0140	0141	0142	0143	0144	0145	0146	0147	0148	0149	014A	014B	014C	014D	014E	014F
Ḹ	ḹ	Ṁ	ṁ	Ṃ	ṃ	Ṅ	ṇ	Ṇ	ṅ	Ñ	ñ	ň	Ň	ŋ	Ō	ō	Ŏ	ŏ	



0150	0151	0152	0153	0154	0155	0156	0157	0158	0159	015A	015B	015C	015D	015E	015F	0160	0161	0162	0163
Ŏ	ŏ	Œ	œ	Ř	ř	Ŕ	ŕ	Ř	ř	Ś	ś	Ŝ	ŝ	Ş	ş	Š	š	Ț	ț
0164	0165	0166	0167	0168	0169	016A	016B	016C	016D	016E	016F	0170	0171	0172	0173	0174	0175	0176	0177
Ţ	ţ	Ț	ț	Ŭ	ŭ	Ū	ū	Ů	ů	Ű	ű	Ú	ú	Ų	ų	Ŵ	ŵ	Ŷ	ŷ
0178	0179	017A	017B	017C	017D	017E													
Ỳ	Ỳ	Ỳ	Ỳ	Ỳ	Ỳ	Ỳ													

Latin Extended-B

Block from 0180 to 024F

018F	0192	01B5	01B6	01FA	01FB	01FC	01FD	01FE	01FF	0218	0219	021A	021B	0237
Ə	ƒ	Ƶ	ƶ	Ǻ	ǻ	Ǽ	ǽ	Ø	ø	Ş	ş	Ț	ț	Ј

IPA Extensions

Block from 0250 to 02AF

0259
ə

Spacing Modifier Letters

Block from 02B0 to 02FF

02C6	02C7	02C9	02D8	02D9	02DA	02DB	02DC	02DD
ˆ	˘	ˉ	˙	˚	◌	◌	˜	˝

Greek and Coptic

Block from 0370 to 03FF

0394	03A9	03BC	03C0
Δ	Ω	μ	π

Latin Extended Additional

Block from 1E00 to 1EFF

1E80	1E81	1E82	1E83	1E84	1E85	1E8A	1E8B	1EF2	1EF3
Ẁ	ẁ	Ẃ	ẃ	Ẅ	ẅ	Ẇ	ẇ	Ỳ	ỳ

General Punctuation

Block from 2000 to 206F

2007	2008	200B	2013	2014	2018	2019	201A	201C	201D	201E	2020	2021	2022	2026	2030	2039	203A	2042	2044
			—	—	‘	’	,	”	”	”	†	‡	●	...	%∞	◁	▷	**	/
2051																			
**																			

Superscripts and Subscripts

Block from 2070 to 209F

2070	2074	2075	2076	2077	2078	2079	2080	2081	2082	2083	2084	2085	2086	2087	2088	2089
0	4	5	6	7	8	9	0	1	2	3	4	5	6	7	8	9

Currency Symbols

Block from 20A0 to 20CF

20AC
€

Letterlike Symbols

Block from 2100 to 214F

2113	2122	2126
ℓ	™	Ω

Number Forms

Block from 2150 to 218F

2160	2161	2162	2163	2164	2165	2166	2167	2168	2169	216C	216D	216E	216F
I	II	III	IV	V	VI	VII	VIII	IX	X	L	C	D	M

Arrows

Block from 2190 to 21FF

2190	2191	2192	2193	2196	2197	2198	2199	21A9	21B0	21B1	21B2	21B3	21B4	21B5	21C6
←	↑	→	↓	↖	↗	↘	↙	↺	↻	↷	↶	↵	↴	↵	↹

Mathematical Operators

Block from 2200 to 22FF

2202	2206	220F	2211	2212	2215	2219	221A	221E	222B	2248	2260	2264	2265	22C5
∂	Δ	Π	Σ	−	/	·	√	∞	∫	≈	≠	≤	≥	·

Enclosed Alphanumerics

Block from 2460 to 24FF

24C5
®



Geometric Shapes

Block from 25A0 to 25FF

25A0	25A1	25AF	25B2	25B3	25CA	25CB	25CF
■	□	▣	▲	△	◆	◯	●

Miscellaneous Symbols

Block from 2600 to 26FF

262E
☺

Dingbats

Block from 2700 to 27BF

2713	2715	2780	2781	2782	2783	2784	2785	2786	2787	2788
✓	✕	①	②	③	④	⑤	⑥	⑦	⑧	⑨

Private Use Area

Block from E000 to F8FF

E000	E002	F6C3
↵	↻	'

Alphabetic Presentation Forms

Block from FB00 to FB4F

FB00	FB01	FB02	FB03	FB04
ff	fi	fl	ffi	ffl

Arabic Presentation Forms-B

Block from FE70 to FEFF

FEFF

OpenType Layout Features

For details about OpenType Layout Features see the [OpenType Layout tag registry](#).

Substitution Features

2₂²	Access All Alternates This feature makes all variations of a selected character accessible.	fi	Standard Ligatures Replaces a sequence of glyphs with a single glyph which is preferred for typographic purposes. This feature covers the ligatures which the designer/manufacturer judges should be used in normal conditions.
123	Tabular Figures Replaces figure glyphs set on proportional widths with corresponding glyphs set on uniform (tabular) widths.	7/	Numerators Replaces selected figures which precede a slash with numerator figures, and replaces the typographic slash with the fraction slash.
/8	Denominators Replaces selected figures which follow a slash with denominator figures.	7/8	Fractions Replaces figures separated by a slash with 'common' (diagonal) fractions.
x²	Superscript Replaces lining or oldstyle figures with superior figures (primarily for footnote indication), and may replace lowercase letters with superior letters (primarily for abbreviated French titles).	x₂	Subscript The "subs" feature may replace a default glyph with a subscript glyph.
H₂	Scientific Inferiors Replaces lining or oldstyle figures with inferior figures (smaller glyphs which sit lower than the standard baseline, primarily for chemical or mathematical notation). May also replace lowercase characters with alphabetic inferiors.	1st	Ordinals Replaces default alphabetic glyphs with the corresponding ordinal forms for use after figures.
{G}	Case-Sensitive Forms Shifts various punctuation marks up to a position that works better with all-capital sequences or sets of lining figures; also changes oldstyle figures to lining figures.	§§	Localized Forms This feature enables localized forms of glyphs to be substituted for default forms.
GG	Stylistic Alternates Many fonts contain alternate glyph designs for a purely esthetic effect; these don't always fit into a clear category like swash or historical. This feature replaces the default forms with the stylistic alternates.	[1]	Stylistic Set 1 Glyphs in stylistic sets may be designed to harmonise visually, interact in particular ways, or otherwise work together.
[2]	Stylistic Set 2	[3]	Stylistic Set 3
[4]	Stylistic Set 4	[5]	Stylistic Set 5
[6]	Stylistic Set 6	[8]	Stylistic Set 8

**[20]**

Stylistic Set 20

1•①

Alternate Annotation Forms

Replaces default glyphs with various notational forms (e.g. glyphs placed in open or solid circles, squares, parentheses, diamonds or rounded boxes).

Positioning Features

N⇌E

Capital Spacing

Globally adjusts inter-glyph spacing for all-capital text. Most typefaces contain capitals and lowercase characters, and the capitals are positioned to work with the lowercase. When capitals are used for words, they need more space between them for legibility and esthetics.

T⇌o

Kerning

Adjusts amount of space between glyphs, generally to provide optically consistent spacing between glyphs.



All Alternates

All alternates are accessible with OpenType layout feature capable applications. If not specified, the feature is registered for all language systems.

fi Standard Ligatures

ff	ffi	ffl	fi	fl
----	-----	-----	----	----

123 Tabular Figures

	#	\$	%	+	,	.	0	1	2	3	4	5	6	7	8	9	:
;	<	=	>	¢	£	¤	¥	§	¬	±	×	÷	<i>f</i>			‰	€
–	≈	≠	≤	≥													

7/ Numerators

/	0	1	2	3	4	5	6	7	8	9
---	---	---	---	---	---	---	---	---	---	---

/8 Denominators

0	1	2	3	4	5	6	7	8	9
---	---	---	---	---	---	---	---	---	---

7/8 Fractions

/	0	1	2	3	4	5	6	7	8	9	0	1	2	3	4	5	6
7	8	9															

x² Superscript

2	3	1	0	4	5	6	7	8	9
---	---	---	---	---	---	---	---	---	---

**x₂**

Subscript

0	1	2	3	4	5	6	7	8	9
----------	----------	----------	----------	----------	----------	----------	----------	----------	----------

H₂

Scientific Inferiors

0	1	2	3	4	5	6	7	8	9
----------	----------	----------	----------	----------	----------	----------	----------	----------	----------

1st

Ordinals

a	b	c	d	e	f	g	h	i	j	k	l	m	n	o	p	q	r
s	t	u	v	w	x	y	z										

{G}

Case-Sensitive Forms

()	-	[]	{	}	i	«	-	»	¿	-	—	<	>
----------	----------	----------	----------	----------	----------	----------	----------	----------	----------	----------	----------	----------	----------	-------------	-------------

Şş

Localized Forms

Latin, Azeri

i

Latin, Catalan

l	l·
----------	-----------

Latin, Crimean Tatar

i

Latin, Moldavian

Ş	ş	Ț	ț
----------	----------	----------	----------



Latin, Romanian

Ș ș Ț ț

Latin, Turkish

İ

GG Stylistic Alternates

G Ğ Ğ Ğ Ğ

[1] Stylistic Set 1

G Ğ Ğ Ğ Ğ

[2] Stylistic Set 2

à á â ã ä å ā ă q ă

[3] Stylistic Set 3

ı í ĩ ĭ

[4] Stylistic Set 4

Œ

[5] Stylistic Set 5

1



[6] Stylistic Set 6

®

[8] Stylistic Set 8

"	#	\$	%	'	+	0	1	2	3	4	5	6	7	8	9	<	=
>	¢	£	¤	¥	ª	¬	°	±	º	¼	½	¾	×	÷	∞	/	€
ℓ	I	II	III	IV	V	VI	VII	VIII	IX	X	L	C	D	M	–	≈	≠
≤	≥	o	1	2	3	4	5	6	7	8	9	a	b	c	d	e	f
g	h	i	j	k	l	m	n	o	p	q	r	s	t	u	v	w	x
y	z	#	\$	%	+	0	1	2	3	4	5	6	7	8	9	<	=
>	¢	£	¤	¥	¬	±	×	÷	∞	€	–	≈	≠	≤	≥	1	

[20] Stylistic Set 20

×

1① Alternate Annotation Forms

Ⓟ	①	②	③	④	⑤	⑥	⑦	⑧	⑨
---	---	---	---	---	---	---	---	---	---



Languages

Information about languages is mainly based on the Unicode Common Locale Data Repository. For details visit the [Unicode CLDR Project](#).

Latin

Afrikaans	Galician	Makhuwa-Meetto	Scottish Gaelic
Albanian	Ganda	Makonde	Sena
Asu	German	Malagasy	Serbian
Basque	Gusii	Maltese	Shambala
Bemba	Hungarian	Manx	Shona
Bena	Icelandic	Meru	Slovak
Breton	Inari Sami	Morisyen	Slovenian
Catalan	Indonesian	North Ndebele	Soga
Chiga	Irish	Northern Sami	Somali
Colognian	Italian	Norwegian Bokmål	Spanish
Cornish	Jola-Fonyi	Norwegian Nynorsk	Swahili
Croatian	Kabuverdianu	Nyankole	Swedish
Czech	Kalaallisut	Oromo	Swiss German
Danish	Kalenjin	Polish	Taita
Dutch	Kamba	Portuguese	Teso
Embu	Kikuyu	Quechua	Turkish
English	Kinyarwanda	Romanian	Upper Sorbian
Esperanto	Latvian	Romansh	Uzbek
Estonian	Lithuanian	Rombo	Volapük
Faroese	Lower Sorbian	Rundi	Vunjo
Filipino	Luo	Rwa	Walser
Finnish	Luxembourgish	Samburu	Welsh
French	Luyia	Sango	Western Frisian
Friulian	Machame	Sangu	Zulu



Character Set

Adobe

Adobe Latin-1

Apple Macintosh

MacOS Central European Latin
MacOS Croatian
MacOS Iceland
MacOS Roman (Standard Latin)
MacOS Romanian
MacOS Turkish

ISO 8859

8859-1 Latin-1 Western European
8859-13 Latin-7 Baltic Rim
8859-15 Latin-9
8859-16 Latin-10 South-Eastern European
8859-2 Latin-2 Central European
8859-3 Latin-3 South European
8859-4 Latin-4 North European
8859-9 Latin-5 Turkish

Microsoft Windows

MS Windows 1250 Central European Latin
MS Windows 1252 Western (Standard Latin)
MS Windows 1254 Turkish Latin
MS Windows 1257 Baltic Latin



Technical Data

Identification

Table	Description	Value
-	File name	OVOCircular-Bold.otf
-	File size	87256 bytes
-	MD5 checksum	70B0F0E02660653B3077EED4CEFD8DEC
head	created	Thu Jan 26 10:45:33 2023
head	modified	Tue Jan 31 16:16:31 2023
name	Unique font identifier	Lineto: OVO Circular-Bold: 2023
name	Version string	Version 5.000; build 0002
CFF	Outline format	PostScript

Names

ID	Description	Value
1	Family name	OVO Circular Bold
2	Subfamily name	Regular
4	Full font name	OVO Circular Bold
6	Postscript name	OVOCircular-Bold
16	Typographic Family name	OVO Circular
17	Typographic Subfamily name	Bold

Classification & Style

Table	Description	Value
OS/2	Width class	5 - Medium (normal)
OS/2	Weight class	700 - Bold
post	Italic angle	0.0°
OS/2	fsSelection style bits	
head	macStyle bits	
OS/2	PANOSE Family Kind	2 - Latin Text
OS/2	PANOSE Serif Style	2 - Normal Sans
OS/2	PANOSE Weight	8 - Bold
OS/2	PANOSE Proportion	4 - Even Width
OS/2	PANOSE x-height	4 - Constant/Large



Legal Information

ID	Description	Value
0	Copyright	© 2023, Copyright by Lineto. All rights reserved.
7	Trademark	Circular is a trademark of Lineto
8	Manufacturer	Lineto
9	Designer	Laurenz Brunner
10	Font Description	OVO Circular is a custom version of LL Circular created for OVO Energy. LL Circular is designed by Laurenz Brunner, first released by Lineto in 2013. Font engineering and mastering by Alphabet Type GmbH.
11	Vendor URL	https://www.lineto.com
12	Designer URL	https://www.lineto.com/The+Designers
13	License Description	No use of this font is allowed without Lineto's consent and without the user's compliance with the Lineto EULA and the SUL. Lawful use of the fonts or the data contained within the font files excludes modifying, reassembling, renaming, storing on publicly available servers, redistributing and selling. Any unlawful use of this typographic software will be prosecuted. For additional information see https://lineto.com/licensing
14	License Info URL	https://lineto.com/licensing

Vertical Metric

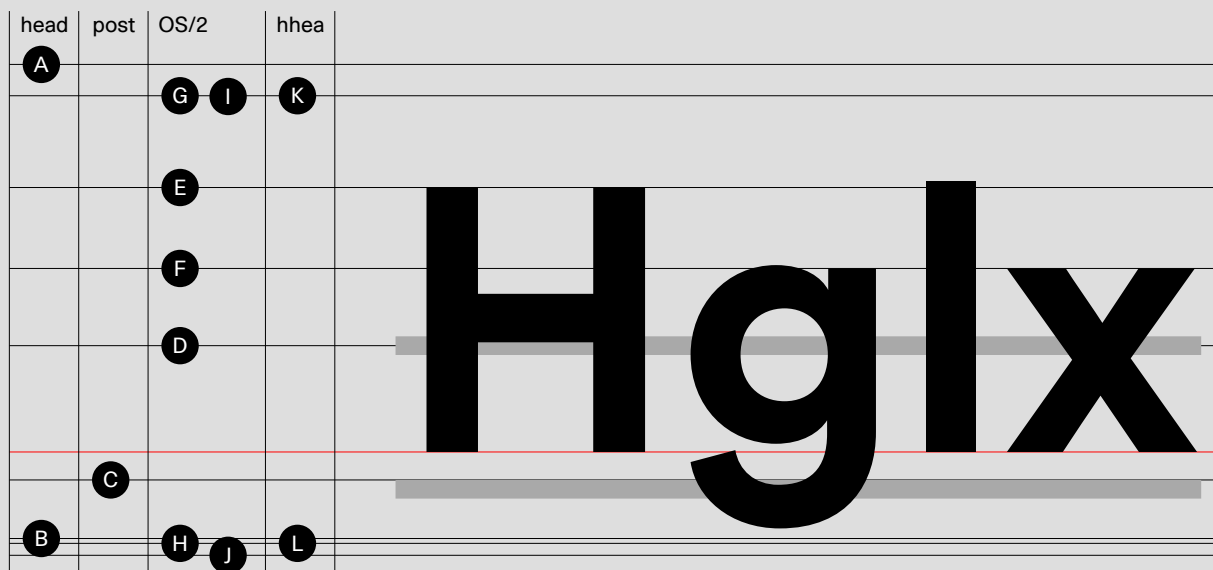


	Table	Description	Value
	head	Units perEM	1000
A	head	y Max	1039
B	head	y Min	-232
C	post	Underline Position	-75
	post	Underline Size	50
D	OS/2	Strikeout Position	285
	OS/2	Strikeout Size	50
E	OS/2	Caps Height	709
F	OS/2	x Height	492
G	OS/2	Typo Ascender	955
H	OS/2	Typo Descender	-245
	OS/2	Typo Linegap	0
I	OS/2	Win Ascender	953
J	OS/2	Win Descender	277
K	hhea	Ascender	955
L	hhea	Descender	-245
	hhea	Linegap	0